

BLACK◆DIAMOND

Gas Deep Fryers - BDGF Series

Black Diamond's floor standing gas deep fryers are constructed with a 16 gauge stainless steel tank and have a thermostat range of 200°F (93°C) to 400°F (204°C). Long lasting baffles are mounted in the heat exchange tubes to provide maximum heating and combustion efficiency. A standing pilot light design provides a ready flame when heat is required and an automatic shut off function when the fryer temperature exceeds 450°F (232°C).



BDGF-90/NG
BDGF-90/LPG
BDGF-120/NG
BDGF-120/LPG

BDGF-150/NG
BDGF-150/LPG



Construction

- ◆ Welded 16 gauge stainless steel tank with a super smooth machine finish ensures easy cleaning
- ◆ Long lasting baffles are mounted in the heat exchange tubes to provide maximum heating and combustion efficiency
- ◆ Standing pilot light design provides a ready flame when heat is required
- ◆ Cabinet is constructed with a stainless steel front and door with galvanized sides and back

Controls

- ◆ Thermostat maintains temperature between 200° (93°C) and 400°F (204°C)
- ◆ Integrated gas control valve acts as a manual and pilot valve, automatic pilot valve, gas filter, pressure regulator and automatic main valve
- ◆ Gas control valve prevents gas flow to the main burner until pilot is established and shuts off gas flow automatically if the pilot flame goes out
- ◆ Temperature limit automatically shuts off all gas flow if the fryer temperature exceeds 450°F (232°C)
- ◆ Includes Robert Shaw components that are made in the USA

Operations

- ◆ Standing pilot and thermostat maintain temperature automatically at the selected temperature (between 200°F (93°C) and 400°F (204°C))
- ◆ Front 1-1/4" drain for quick draining

Standard Accessories

- ◆ Two nickel plated oblong wire mesh baskets
- ◆ One nickel plated tube rack
- ◆ One drain extension
- ◆ Built-in heat deflector
- ◆ 6" adjustable legs

Available Accessories (Sold Separately)

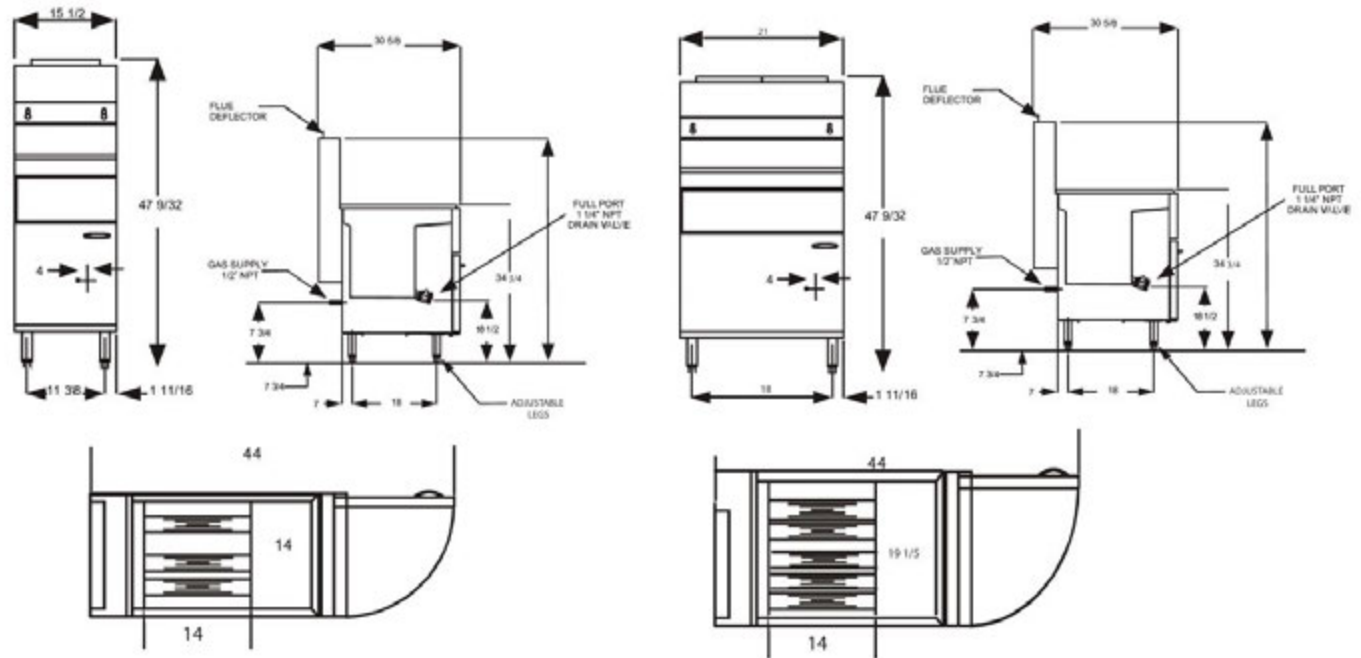
- ◆ Stainless Steel Cover
- ◆ Casters
- ◆ Joiner Strips
- ◆ Splash Guard



BLACK◆DIAMOND

Gas Deep Fryers - BDGF Series

Plan View



BDGF-90 and BDGF-120

BDGF-150

Specifications

Model Number	BTU	Net Weight (lb)	Gross Weight (lb)	Oil Capacity (lb)
BDGF-90/NG	90,000	152 (69kg)	169 (77kg)	35-40 (18.5-23 L)
BDGF-90/LPG	90,000	152 (69kg)	169 (77kg)	35-40 (18.5-23 L)
BDGF-120/NG	120,000	163 (74kg)	180 (82kg)	45-50 (21.3-25 L)
BDGF-120/LPG	120,000	163 (74kg)	180 (82kg)	45-50 (21.3-25 L)
BDGF-150/NG	150,000	198.5 (90kg)	203(92kg)	65-70 (31-37 L)
BDGF-150/LPG	150,000	198.5 (90kg)	203 (92kg)	65-70 (31-37 L)

Shipping Info

Model Number	Cubic Feet	Dimensions (in)*
BDGF-90/NG	15.9 (0.45 cubic meters)	53 1/2"H x 15 1/2"W x 30 1/4"D
BDGF-90/LPG	15.9 (0.45 cubic meters)	53 1/2"H x 15 1/2"W x 30 1/4"D
BDGF-120/NG	15.9 (0.45 cubic meters)	53 1/2"H x 15 1/2"W x 30 1/4"D
BDGF-120/LPG	15.9 (0.45 cubic meters)	53 1/2"H x 15 1/2"W x 30 1/4"D
BDGF-150/NG	20.5 (0.58 cubic meters)	53 1/2"H x 21"W x 30 1/4"D
BDGF-150/LPG	20.5 (0.58 cubic meters)	53 1/2"H x 21"W x 30 1/4"D

*Height is with legs set at 6"